



ACTIVITY 1

A Day in the Life of Hank the Cowdog



RANCH LIFE SERIES / BOOK 1 / RANCHING AND LIVESTOCK

Chapter 1

Content Area:

Social Studies

Topic:

Map Skills

Objective:

Students will use cardinal instructions while referencing parts of a map.

Texas Essential Knowledge and Skills (TEKS):

K.4B, 1.4A, 1.6A, 2.5A, 3.5C, 4.6A, 5.6A





A Day in the Life of Hank the Cowdog

CONTENT AREA: Social Studies

TOPIC: Map Skills

GAME MATERIALS:

- RANCH MAP (33" x 25.5") - 1 per student table group, laminate (*To print additional maps, download PDF from ranchlifelearning.com*)
- SECURITY BRIEFING (page A1-2): 1 per student table group
- A DAY IN THE LIFE OF HANK THE COWDOG - HANK CARD (page A1-3): 1 per student
- A DAY IN THE LIFE OF HANK THE COWDOG - CHARACTERS (page A1-4): 1 per student table group
- Dry erase marker: 1 per student or student table group
- THE BOTTOM LINE (pages A2-14): 1 per student or student table group

READING STRATEGY:

- Students will read Chapters 1 & 2 (pages 1-7).
- Students working in table groups will place the coordinating A DAY IN THE LIFE OF HANK THE COWDOG - CHARACTERS cards on the map where they belong, as each one is mentioned in the reading.

GAME INSTRUCTIONS:

1. Each table group of students will need a RANCH MAP and one A DAY IN THE LIFE OF HANK THE COWDOG - HANK CARD.
2. Have students label the cardinal directions (*north, south, east, west*) on the map with the dry erase marker.
3. Students will take turns moving the HANK CARD by following the Game Instructions on the SECURITY BRIEFING. (You may choose to instead read the Game Instructions aloud to the class.)

Optional: The width of the HANK CARD is equal to 50 square feet. There are 43,560 square feet in an acre. As students help "HANK" travel across the map, have them calculate how many feet he travels.

STUDENT SKILLS ASSESSMENT:

- Have students (or student groups) complete THE BOTTOM LINE worksheet at the end of the game.

A Day in the Life of Hank the Cowdog



SECURITY BRIEFING –

WORDS OF WISDOM FROM HANK THE COWDOG:

As head of Ranch Security, it is my job to patrol the ranch on a daily basis. If I were an average dog, like Drover, I might get lost. Understanding the lay of the land is a job requirement!

*This mapping activity will help you understand how to use **cardinal directions** when referencing parts of a map. It is important I get from place to place as quickly as possible without getting lost.*

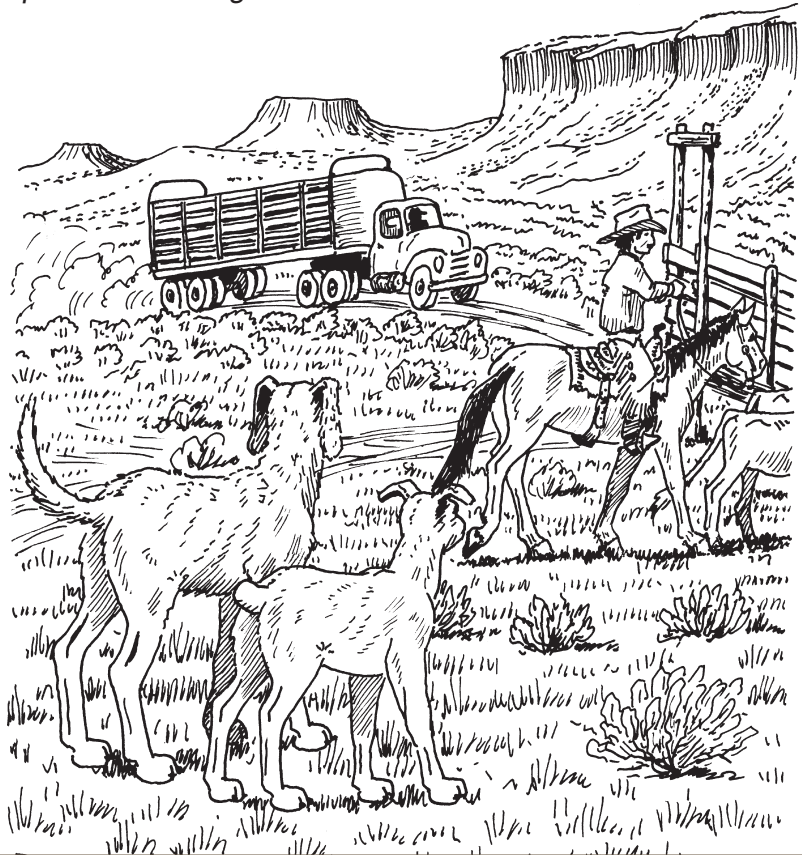
Prepare to be tuckered out!

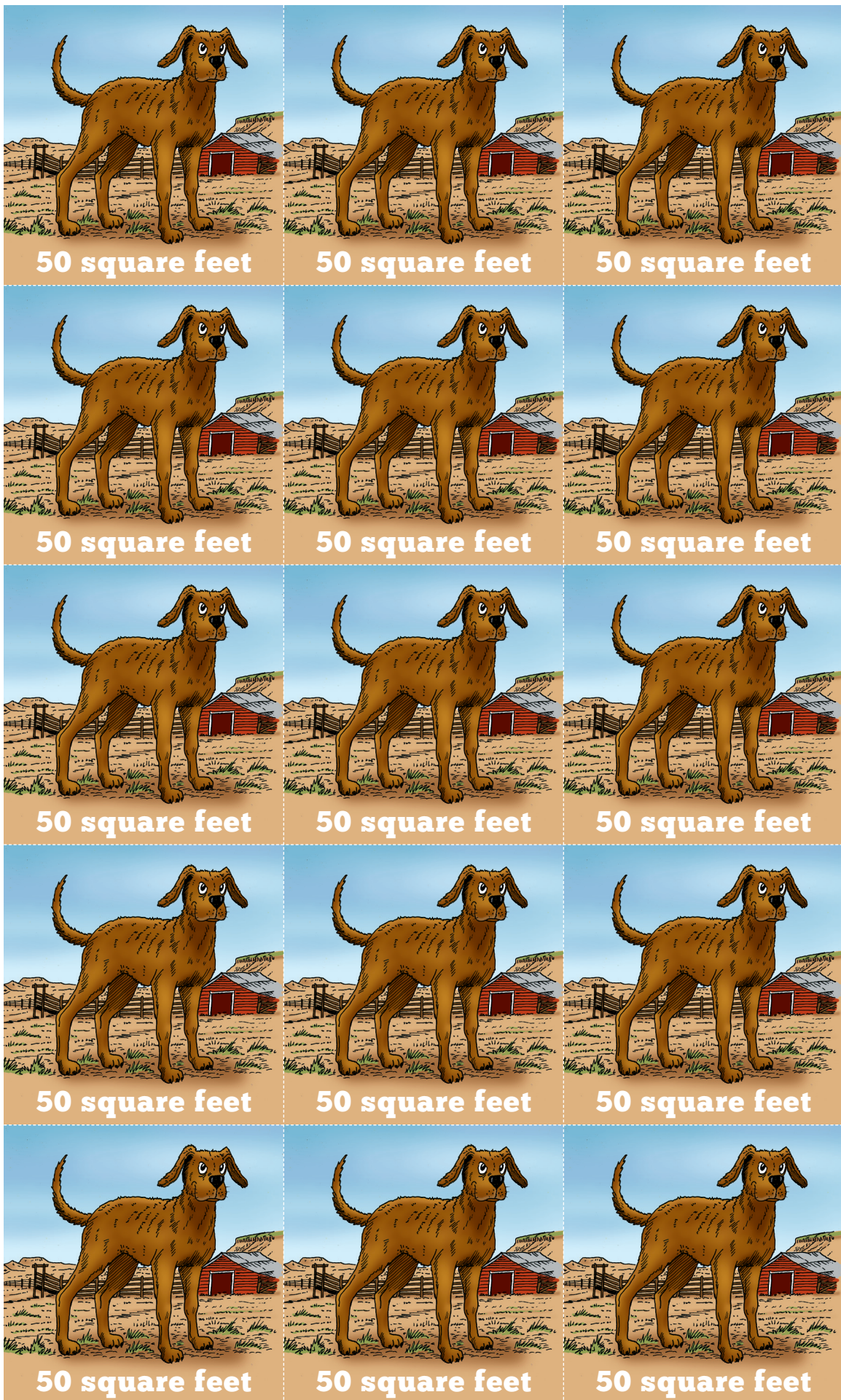
ACTIVITY INSTRUCTIONS:

1. Each group will need one RANCH MAP and one A DAY IN THE LIFE OF HANK THE COWDOG - HANK CARD, which will represent Hank as he travels across the ranch on the map.
2. Make sure you label the cardinal directions on the map (north, south, east, west) with your dry erase marker.
3. Each person in your group will take turns moving the HANK CARD by following the game instructions. After reading and accomplishing each set of instructions, answer the related question on a separate piece of paper before moving onto the next set of instructions.
4. OPTIONAL: The width of your HANK CARD is equal to 50 square feet. There are 43,560 square feet in an acre. As you travel, calculate how many feet Hank travels.

WRAP UP:

Fill out THE BOTTOM LINE worksheet after you have completed the game.



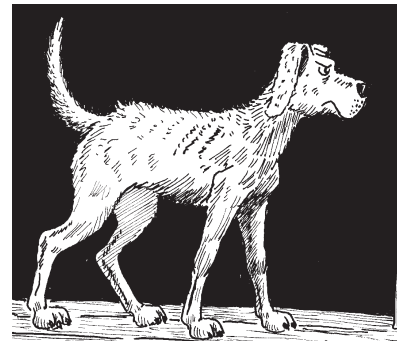




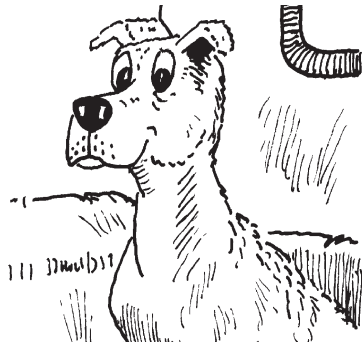
Human (Sally May)



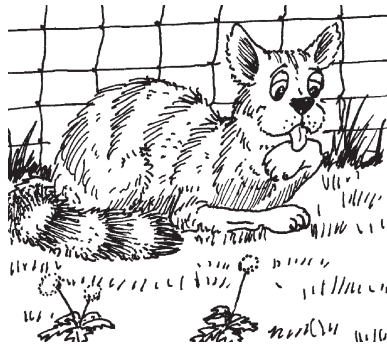
Human (Loper)



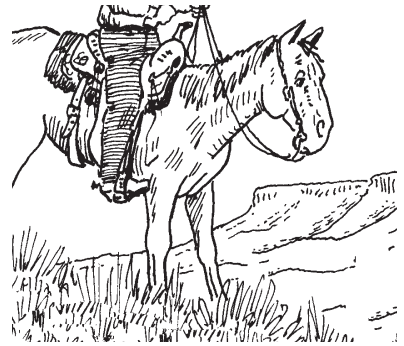
Cowdog (Hank)



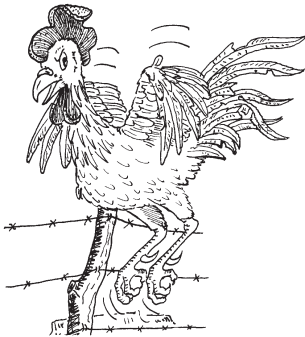
Cowdog (Drover)



Cat (Pete)



Horse



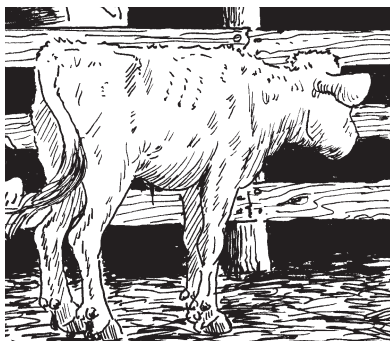
Chicken



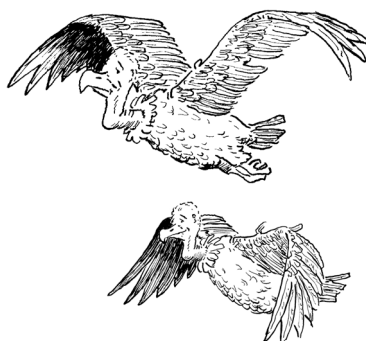
Rattlesnake



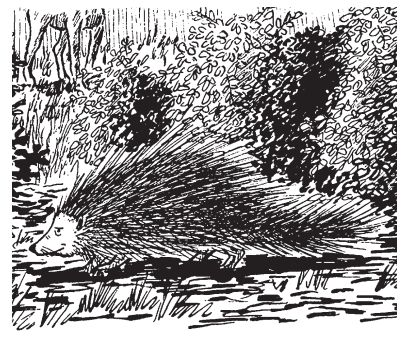
Coyotes



Calf



Buzzards



Porcupine

A Day in the Life of Hank the Cowdog



SECURITY BRIEFING –

GAME INSTRUCTIONS:

1. Begin by placing your HANK THE COWDOG CARD at the machine shed.
2. HANK saunters *northeast* to wet his whistle before the day gets started.
 - a. *Where is HANK now?*
3. HANK moves *south* to get his breakfast from Sally May at the back door.
 - a. *Where is HANK now?*
4. HANK heads *southwest* to the gas tank. This is where he and Slim meet up for the day.
 - a. *Where is HANK now?*
5. HANK jumps into Slim's truck and they head to the cake house.
 - a. *What directions would HANK give Slim for the truck to get to the cake house?*
6. After picking up the cake, Slim and HANK fire up the truck again and head *north* up the road. They take a turn to the *west* to check on the herd.
 - a. *Where is HANK now?*
7. Slim's stomach starts to rumble, they get back in the truck and head to ranch house for lunch.
 - a. *What directions would HANK give Slim for the truck to get to the ranch house?*
8. At lunch HANK hears about coyotes being spotted at waterhole 83. In order to protect the Ranch, he should check it out!
 - a. *What directions would HANK give Slim for the truck to get to waterhole 83?*
9. HANK finds coyote paw prints and follows them on paw (foot) *south* to another water source.
 - a. *Where is HANK now?*
10. After showing those pesky coyotes who was boss, HANK strutted his stuff back to the pickup. Slim decides to check the mail for Sally May on the way to the horse pasture. HANK hopped into the back of the truck because his paws were tired!
 - a. *What directions would HANK give Slim for the truck to get to get to the mail box?*
11. After grabbing the mail, Slim drove through the horse pasture to make sure all of the horses are okay after our coyote scare.
 - a. *Map out a path from the mail box to the horse pasture and back.*
 - b. *How long do you think it will take HANK and Slim to check the horse pasture and get back to the mail box? Explain.*
12. Slim dropped HANK and the mail off at the Ranch House and headed home.
 - a. *What directions would HANK give Slim for the truck to get from the mail box to the ranch house?*
13. HANK ate dinner and then headed *northwest* to get some shut eye.
 - a. *Where is HANK now?*

A Day in the Life of Hank the Cowdog



NAME: _____ DATE: _____

THE BOTTOM LINE

When you mapped out Hank's day on the ranch, you might have realized why, *"a ranch without a Head of Ranch Security would be like... I don't know what, but it wouldn't be much."*

The Head of Ranch Security's job is never done! The responsibility is gigantic and not just any dog could stand the pressure.

Answer the questions below:

1. How many feet do you think Hank traveled by paw (foot)?
2. How many feet do you think Hank traveled in the pickup truck?
3. Which location that Hank visited was the farthest from the Ranch House?
4. What was the shortest distance that Hank traveled during the day?
5. How far is it from where Hank sleeps to where Hank eats?
6. What do you think was Hank's favorite part of the day?

